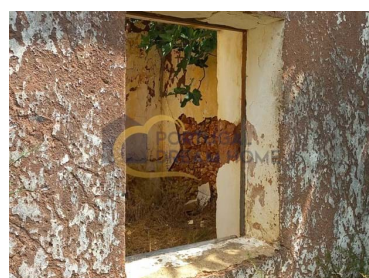




## São Bartolomeu de Messines - Country house



**VENDIDO | SOLD | VENDU**

N/A  
CLASSE ENERGETICA



Bedrooms



Area (m<sup>2</sup>)



Land Area (m<sup>2</sup>)

N/A

(EUR €)

### Ruin | Land 2960 m2 | Nora | S.B. Messines | Silves

Ruin located within the village of Nora, on an elevated point, with a good view to the south. To rebuild. With 48 useful m2, plus outbuildings, haystack, storage room and pigsties, located on land with an area of 2960 m2, of which 2480 m2 are urban.

Possibility of expanding construction (non-binding information, does not require requesting information from Silves municipal council).

The village of Nora is located just 10 minutes from the town of São Bartolomeu de Messines and the city of Silves, 25 minutes from the beaches of this municipality and 40 minutes from Faro airport. 10 minutes from the IC1 and A2 roads.

Excellent investment.



**Nélío Rodrigues**

+351 966 439 047 <sup>2</sup>

n.rodrigues@portugaldh.com

T +351 289 512 728 <sup>1</sup> · T +351 963 748 151 <sup>2</sup> · E geral@portugaldh.com  
Av. dos Descobrimentos Edf. Arcadas de S. João Loja O 8200-260 Albufeira  
AMI 22786

<sup>1</sup> (Call to national fixed network) | <sup>2</sup> (Call to national mobile network)



## Property Features

- Proximity: Open field
- Drive way
- Water Cistern
- Solar orientation: South, East, West
- Electric network
- Acessos: Alcatrão, Asfalto
- Terreno: Agrícola, Residencial
- Built year: 1935
- Views: Countryside views
- Energetic certification: Exempt
- Mains water
- Permite Animais
- Luz Natural: Muito Iluminado
- Tipo De Empreendimento: Habitação



**Nélío Rodrigues**

+351 966 439 047 <sup>2</sup>

n.rodrigues@portugaldh.com

**T +351 289 512 728 <sup>1</sup> · T +351 963 748 151 <sup>2</sup> · E geral@portugaldh.com**  
**Av. dos Descobrimentos Edf. Arcadas de S. João Loja O 8200-260 Albufeira**  
**AMI 22786**

<sup>1</sup> (Call to national fixed network) | <sup>2</sup> (Call to national mobile network)