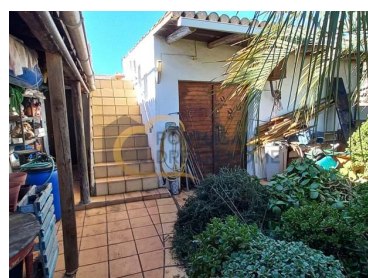




São Bartolomeu de Messines - Country house



| | | | | |
|---|--|--|---|------------|
|  3 |  3 |  286 |  1080 | N/A |
| Bedrooms | Bathrooms | Area (m ²) | Land Area (m ²) | (EUR €) |

House + Guest House | Swimming pool | Garden | Benaciate | São Bartolomeu de Messines

Single storey house with 2 bedrooms, one of which is en suite (shower + bath) and a small private room with stove and closet, kitchen and dining room with fireplace, living room and office with fireplace and guest bathroom with shower .

Guest house (apart from the main house) with 1 bedroom, bathroom with shower and open space living room and kitchen.

Outside, there is a magnificent garden with various types of trees, plants and flowers from various parts of the planet, a swimming pool with a heating system, a wood oven, a workshop/warehouse, a jacuzzi and an orchid greenhouse.

In addition to the porch of the main house, there are also 3 terraces on roof floor level, where you can enjoy the landscape surrounding the house.



Nélío Rodrigues

+351 966 439 047 ²

n.rodrigues@portugaldh.com

T +351 289 512 728 ¹ · T +351 963 748 151 ² · E geral@portugaldh.com
 Av. dos Descobrimentos Edf. Arcadas de S. João Loja O 8200-260 Albufeira
 AMI 22786

¹ (Call to national fixed network) | ² (Call to national mobile network)



Next to this mixed building, another rustic and flat plot of land with a small lake, with an area of 2080 m² is included in the sale price. In total, adding this plot, the land area is 3160 m².

It has a borehole, a cistern and is prepared for connection to the existing mains water supply at this location.

Property Features

- Air conditioning
- Walk-in wardrobe
- Gazebo
- Views: Countryside views
- Guest cottage
- Borehole
- Quiet Location
- Barbecue
- Energetic certification: E
- Mains water
- Electric network
- Parking place type: Exterior
- Rés Do Chão
- Acessos: Asfalto
- Cozinha: Móveis Madeira
- Luz Natural: Iluminado
- Terreno: Residencial
- Nº De Arrecadações: 2
- Nº De Inquilinos: 0
- Nº De Terraços: 3
- Fireplace
- Proximity: Open field, Playground
- Laundry
- Security alarm
- Pantry
- Septic tank
- Closed fireplace
- Walled land area
- Solar orientation: South, East, West
- Balcony
- Furnished
- Reservatório De Agua
- Suite
- Caixilharia: Alumínio, Dupla, Madeira
- Fuga De Fumos: Chaminé De Alvenaria
- Pavimento: Cerâmica
- Tipo De Empreendimento: Habitação
- Nº De Casas De Banho: 3
- Nº De Marquises: 1



Nélío Rodrigues

+351 966 439 047 ²

n.rodrigues@portugaldh.com

T +351 289 512 728 ¹ · T +351 963 748 151 ² · E geral@portugaldh.com
Av. dos Descobrimentos Edf. Arcadas de S. João Loja O 8200-260 Albufeira
AMI 22786

¹ (Call to national fixed network) | ² (Call to national mobile network)