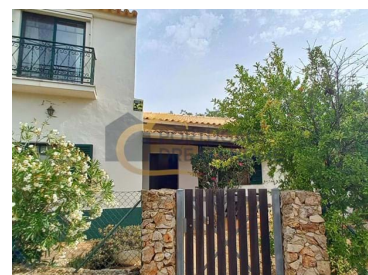




Boliqueime - Villa



 **2**
 Bedrooms

 **2**
 Bathrooms

 **147,28**
 Area (m²)

 **642**
 Land Area (m²)

444 500 €
(EUR €)

2 bedroom house | 642 m2 plot | Boliqueime | Loulé

Located in the charming hills of the municipality of Loulé, this renovated house offers a peaceful and picturesque setting. With a total area of 642m², this property has 2 cozy bedrooms and 2 elegant bathrooms, ideal for a family or couple looking for a charming getaway in the south of Portugal. The house has a large internal area of 95.6m² and a gross area of 147.2m², making it perfect for both living and enjoying a relaxing holiday. The cozy living room has a wood burning stove, creating a cozy atmosphere in the colder months. Furthermore, the property is equipped with air conditioning in the bedroom on the 1st floor, double windows and an alarm system to guarantee comfort and safety for its inhabitants.

The highlight of this house is the spacious terrace, perfect for enjoying the sunny weather and views and where you can relax and enjoy the tranquility of the surroundings.

Located in a quiet area and close to the village of Boliqueime, this property also offers parking space and a water cistern. With class C energy certification, the house benefits from ideal solar orientation



Nélío Rodrigues

+351 966 439 047 ²

n.rodrigues@portugaldh.com

T +351 289 512 728 ¹ · T +351 963 748 151 ² · E geral@portugaldh.com
 Av. dos Descobrimentos Edf. Arcadas de S. João Loja O 8200-260 Albufeira
 AMI 22786

¹ (Call to national fixed network) | ² (Call to national mobile network)



and a renovation carried out in 2009, guaranteeing comfort and quality of life for its residents. Don't miss the opportunity to purchase this charming villa in Loulé, which offers the perfect balance between tranquility and convenience, making it the ideal retreat in the heart of the Algarve. Contact us now and schedule your viewing!

Property Features

- Air conditioning
- Proximity: City, Open field, Playground
- Built year: 1935
- Views: Mountain views
- Double glazing
- Quiet Location
- Closed fireplace
- Energetic certification: C
- Balcony
- Electric network
- Permite Animais
- Reservatório De Agua
- Suite
- Caixilharia: Alumínio, Madeira
- Fuga De Fumos: Chaminé Mecânica
- Pavimento: Cerâmica
- Terreno: Residencial
- Nº De Casas De Banho: 2
- Nº De Varandas: 1
- Fireplace
- Gazebo
- Drive way
- Security alarm
- Water Cistern
- Extractor Fan
- Sealed land area
- Solar orientation: South, East, West
- Renovation year: 2009
- Terrace
- Pisos
- Rés Do Chão
- Acessos: Alcatrão
- Cozinha: Placa, Tijoleira
- Luz Natural: Iluminado
- Revestimento Exterior: Pintado
- Tipo De Empreendimento: Habitação
- Nº De Divisões: 6



Nélío Rodrigues

+351 966 439 047 ²

n.rodrigues@portugaldh.com

T +351 289 512 728 ¹ · T +351 963 748 151 ² · E geral@portugaldh.com
Av. dos Descobrimentos Edf. Arcadas de S. João Loja O 8200-260 Albufeira
AMI 22786

¹ (Call to national fixed network) | ² (Call to national mobile network)