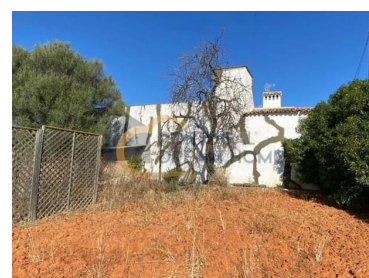





## Almancil - Villa



N/A  
CLASSE  
ENERGÉTICA

 **1192**

Area (m<sup>2</sup>)

**170 000 €**

(EUR €)

## Land with ruin to renovate

Urban land measuring 1192 m with a ruin, located in Patã de Cima, near Boliqueime, in the municipality of Loulé.

Great for renovating or doing a new project.

## Property Features

- Energetic certification: Exempt



**Nelda Coelho**

+351 965 358 776 <sup>2</sup> · +351 289 512 728 <sup>1</sup>

neldacoelho@portugaldh.com

T +351 289 512 728 <sup>1</sup> · T +351 963 748 151 <sup>2</sup> · E geral@portugaldh.com  
Av. dos Descobrimentos Edf. Arcadas de S. João Loja O 8200-260 Albufeira  
AMI 22786

<sup>1</sup> (Call to national fixed network) | <sup>2</sup> (Call to national mobile network)